



WAIRUATANGA

Wairuatanga: The spiritual dimensions of thinking, being, doing and connecting through time and space.

Artist's note on symbolism

The artwork shows Apa-atua, shapeshifter and spiritual messenger from the supreme Io-matua-kore, who resides in the highest realm of heaven.

Apa-atua is taking the form of a hōkioi through te hā, the breath. This relates to the concept of wairuatanga by showing the correlation between spiritual and physical dimensions.

The stars behind show the celestial realm, and the poutama patterns represents the path towards Io-matua-kore.

Artist bio: Isobel Te Aho-White

Kāi Tahu, Ngāti Kahungunu ki te Wairoa.

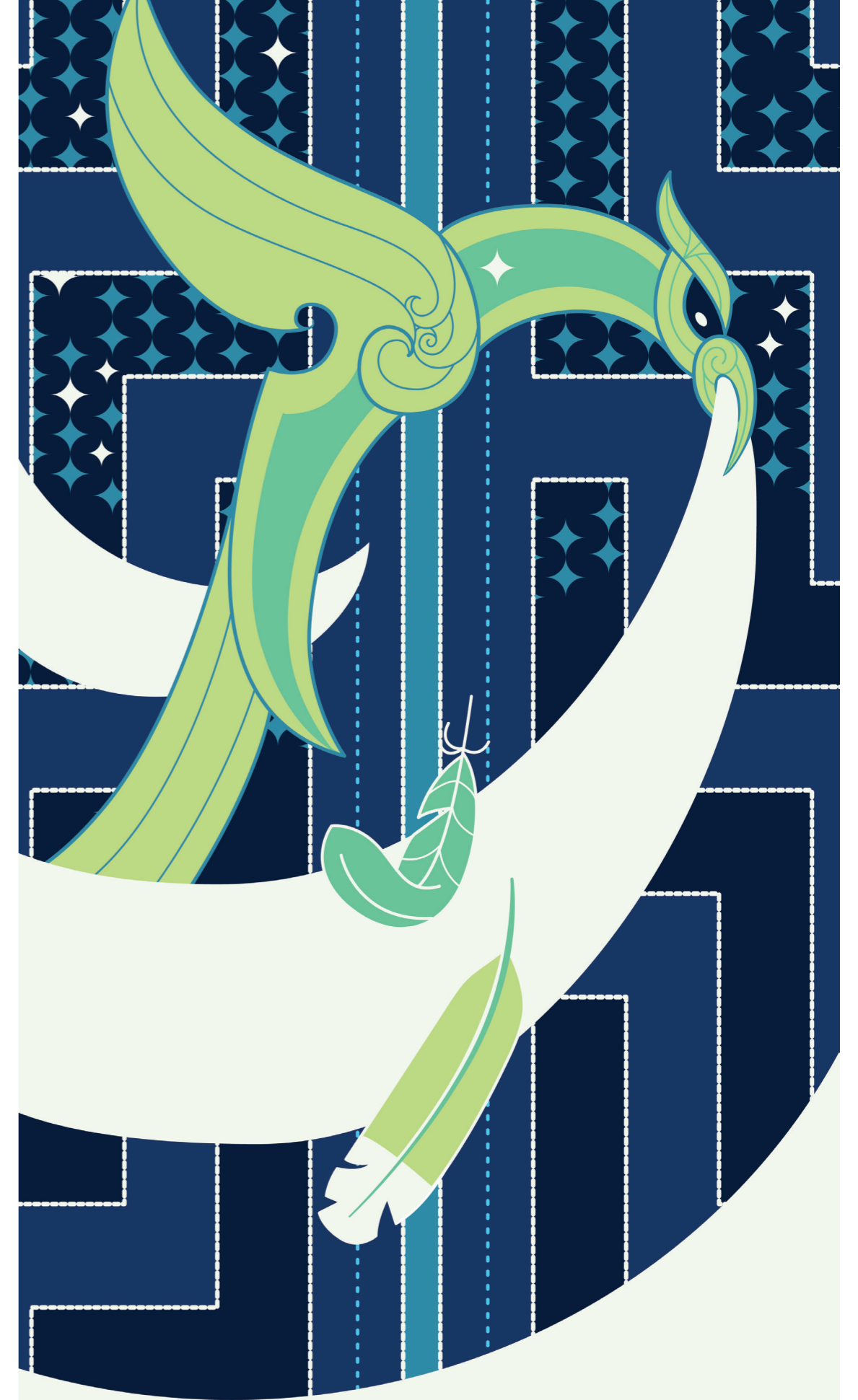
I am an illustrator who has been freelancing for five year since graduating with a design degree from Massey University, majoring in illustration.

I live and work in Te-Whanganui-a-Tara with my partner and cat, and specialise in educational material with an emphasis on mātauranga Māori.

My artistic style draws on my interests in kōwhaiwhai, botanical illustrations and folk art, and my favourite work is children's book illustration.

I have six children's books published so far, through Huia, Scholastic, Te Papa Press, Cengage and Penguin Random House. When I'm not drawing, I enjoy walking, cooking, making music and playing computer games.

izzyjoyart.com



WAIRUATANGA