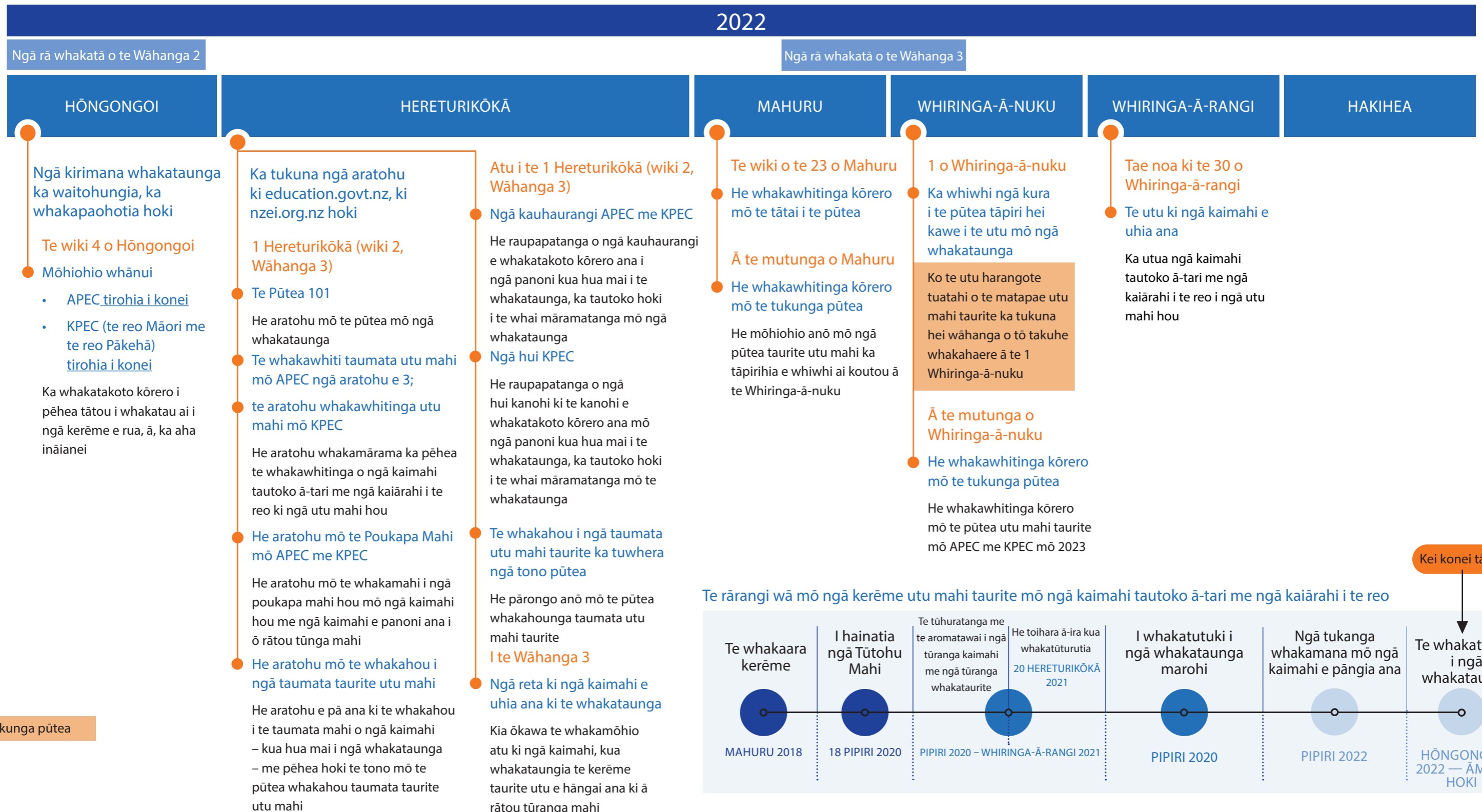


Ngā kerēme utu mahi taurite mō ngā kaimahi tautoko ā-tari me ngā kaiārahi i te reo Te hora i te mahere ara mō ngā kura

He tirohanga whānui tēnei mahere ara o te whakatinanatanga o ngā whakataunga utu mahi taurite mō ngā kaimahi tautoko ā-tari (APEC) mō ngā kaiārahi i te reo (KPEC) hoki. Ka whakaaturia: ngā pārongo matua ka wātea ki a koe; ka kitea ki whea; ngā mahi māu ka tika; ngā mahi whakatinana matua hoki ka whakamaheretia mō ngā tau 2022, 2023 hoki.



Ngā kerēme utu mahi taurite mō ngā kaimahi tautoko ā-tari me ngā kaiārahi i te reo Te hora i te mahere ara mō ngā kura

2023

Ngā rā whakatā mō ngā kura

Ngā rā whakatā o te Wāhanga 1

Ngā rā whakatā o te Wāhanga 2

KOHITĀTEA

HUITANGURU

POUTŪTERANGI

PAENGA-WHĀWHĀ

HARATUA

PIPIRI

HŌNGONGOI

1 o Kohitātea

Te utu whakataunga harangote

Ko te utu harangote tuarua o te matapae utu mahi taurite ka tukuna hei wāhanga o tō taku he whakahaere

28 o Huitanguru

Te rā aukati mō te whakahou taumata utu mahi taurite mō ngā kaimahi

Te rā whakamutunga ka taea e tētahi kaimahi te tono kia whakahoungia tōna taumata nā ngā pānga kua hua mai i ngā whakataunga

31 o Poutūterangi

Te rā aukati mō te tono pūtea whakahou i ngā taumata utu mahi taurite (tae atu ki ngā pira)

Te rā whakamutunga ka taea e ngā kura te tono pūtea whakahou i ngā taumata utu mahi taurite

1 o Paenga-whāwhā

Te utu whakataunga harangote

Ko te utu harangote tuatoru o te matapae utu mahi taurite ka tukuna hei wāhanga o tō taku he whakahaere

Tukunga pūtea



Ētahi wāhi hei kimi tautoko

Mā Te Tāhuhu o Te Mātauranga, NZEI Te Riu Roa me NZSTA ngā kura e tautoko:

- whakapā mai ki te Tāhuhu o te Mātauranga ki ohumahi.support@education.govt.nz, ki 0800 114 117 rānei
- toro atu ki te tomokanga 'Taku' kei education.govt.nz/taku. (takiuru mā tō urunga ESL)
- whakapā atu ki NZEI Te Riu Roa ki payequity@nzei.org.nz, ki 0800 693 443 rānei
- whakapā atu ki NZSTA ki eradvice@nzsta.org.nz, ki 0800 782435 rānei (kōwhiringa #2)

